

# Young People's Education and Skills Operational Sub-Group

## AGENDA

<b>Chair:</b>	John Galligan	<b>Job title:</b>	Head of School Effectiveness, London Borough of Brent
<b>Date:</b>	15 May 2015	<b>Time:</b>	10am – 12 noon
<b>Venue:</b>	London Councils, meeting room 1		
<b>Telephone:</b>	020 7934 9779	<b>Email:</b>	<a href="mailto:Anna-maria.volpicelli@londoncouncils.gov.uk">Anna-maria.volpicelli@londoncouncils.gov.uk</a>

Item 1.	Welcome, introductions and apologies	JG
Item 2.	Notes of the last meeting and matters arising <i>(for agreement)</i>	JG
Item 3.	Work plan monitoring <i>(paper - for information and agreement)</i>	NS
	– Skills Match <i>(presentation)</i>	YB
	– Update on ESIF <i>(verbal)</i>	POB
	– London Ambitions Careers Offer <i>(presentation)</i>	YB
	– Activity through task and finish groups <i>(verbal)</i>	YB
Item 4.	YPES Board agenda (4 June) <i>(paper - for discussion and agreement)</i>	YB
Item 5.	Local Authority Forum agenda (10 June) <i>(for discussion and agreement)</i>	All
Item 6.	Policy Update <i>(paper - to be tabled)</i>	NS
Item 7.	Raising the Participation Age <i>(reports - for information)</i>	POB
	– Participation, NEET and activity Not Known report	
	– Pan-London leavers notification process	
Item 8.	Interim Statement of Priorities <i>(report - for discussion and agreement)</i>	POB
Item 9.	Any Other Business	All

**Date of next meeting: Friday 17 July, 10-12noon, London Councils**

Blank Page

# Notes

## Young People's Education and Skills

### Operational Sub-Group

<b>Date</b>	23 January 2015	<b>Venue</b>	London Councils
<b>Meeting Chair</b>	Debi Christie		
<b>Contact Officer</b>	Neeraj Sharma		
<b>Telephone</b>	020 7934 9524	<b>Email</b>	<a href="mailto:neeraj.sharma@londoncouncils.gov.uk">neeraj.sharma@londoncouncils.gov.uk</a>

---

#### Present

Yolande Burgess (YB)	London Councils Young People's Education and Skills
Debi Christie (DC)	London Borough of Bromley (Acting Chair OSG/SEND Lead)
Lorraine Downes (LD)	City of Westminster (Central Cluster)
Daisy Greenaway (DG)	Greater London Authority
Andy Johnson (AJ)	London Borough of Enfield (North Cluster)
Ann Mason (AM)	Royal Boroughs of Kingston Upon Thames and Richmond (Chair EFG)
David Scott (DS)	London Borough of Hounslow (South West Cluster)
Rachel Whittington (RW)	Education Funding Agency

#### Officers

James Searle (JS)	London Councils Young People's Education and Skills
Neeraj Sharma (NS)	London Councils Young People's Education and Skills

#### Apologies

Trevor Cook	London Borough of Havering (North East Cluster)
John Galligan	London Borough of Brent (Chair OSG/West Central Cluster)
Peter O'Brien	London Councils Young People's Education and Skills
Helen Richardson	London Borough of Barking and Dagenham (ICYP Chair)
Judith Smyth	Association of Colleges London region
Mary Vine-Morris	London Councils Young People's Education and Skills
Sheila Weeden	London Borough of Newham (Chair DAG)

---

## 1 Welcome, introductions and apologies

- 1.1 Debbie Christie welcomed attendees to the meeting and explained she had been asked to chair the meeting in the absence Mary Vine Morris and John Galligan.
- 1.2 Apologies were noted.

## 2 Notes of the last meeting and matters arising

- 2.1 Notes of the last OSG meeting were approved.
- 2.2 OSG members were informed that following Mary Vine-Morris' departure from YPES, John Galligan had taken up the position of the OSG Chair. The OSG Vice-Chair

position was now vacant; OSG members were encouraged to contact YB with expressions of interest for the position by no later than 30 January.

**AP194: OSG members interested in taking up the post of OSG Vice-Chair to contact Yolande Burgess by 30.01.15**

### **3 Work Plan 2015/16**

3.1 YB informed the OSG that recent staffing and funding changes to Young People's Education and Skills meant the work plan 2015-16 was considerably different to previous years. Most notably:

- OSG sub-groups will not continue. Instead, groups would be drawn together based on a task and finish model to influence and shape specific pieces of work, a model that had already proved successful.

3.2 For the 2015-16 year, the work of Young People's Education and Skills will be part funded by the London Enterprise Panel (LEP). To reflect this within the work plan, outputs and deliverables had been agreed with the LEP, through its Skills and Employment Working Group (S&EWG), and there is a specific section on LEP deliverables within the work plan..

3.3 OSG members talked through the work plan circulated in advance of the meeting. The following was discussed:

- The External Funding Group had been helpful as an on-going commissioning group to refer to and it was helpful for pulling together clusters. With the introduction of contract package areas and functional economic areas, there could be merit in reactivating the group at a future date.

3.4 There was consensus amongst the group that a balance was needed between the capacity of the Young People's Education and Skills team, capacity with local authorities, and priorities for the sector. The work plan was approved with the option for final sub-group meetings to go ahead should borough colleagues express an interest for this to happen. There remained the opportunity for a local authority to elect to manage a sub-group.

### **4 Young People's Education and Skills Board Agenda**

4.1 NS talked through the draft Young People's Education and Skills Board agenda and sought feedback as well as any proposed amendments to the agenda. The OSG approved the draft agenda without amendments.

### **5 Young People's Education and Skills Board – proposed revised Constitution**

5.1 YB explained that the Constitution of the Young People's Education and Skills Board describes the accountabilities and responsibilities of the Board and its work, under the governance arrangements of London Councils. From 2015-16 the Young People's Education and Skill team will be part-funded by the LEP. To recognise this investment, revisions to the Constitution were proposed to better reflect the joint working of the Board and the LEP.

5.2 The key proposed changes to the Constitution were:

- **Purpose:** the Board's responsibilities are re-cast to reflect the joint working of the Board with the LEP.
- **Voting members:** the LEP is noted as a member independently of other strategic partners.

- **Chair of London Councils Young People’s Education and Skills Board:** the LEP Skills and Employment Working Group representative will be appointed as a Vice-Chair of the Board.
- 5.3 Some additional non-material amendments had been made to remove duplications, to reflect changes to names of organisations and to recognise changes in London Councils governance.
- 5.4 The OSG accepted the revised Constitution and agreed it should go to the Young People’s Education and Skills Board.

## **6 17+ Report – Institute of Education (IoE) recommendations and Interim Statement of Priorities**

6.1 YB talked through the document circulated in advance of the meeting. It provided a summary of the findings and recommendations of *17+ participation, attainment and progression in London* report that London Councils’ commissioned the IoE to undertake. It also presented the implications of the research and a framework for the production of an Interim Statement of Priorities for young people’s education and skills in London.

6.2 The OSG provided the following feedback:

- There was unanimous support to use the IoE findings and recommendations to inform the priorities for 2015-16 as they identified the biggest challenges for London.
- The breadth and scale of the IoE recommendations meant different approaches and strategies would be needed, particularly in terms of continued lobbying for full funding for full-time 18 year old students. It would be important to reflect this within the interim statement of priorities.
- Delivery of the interim statement of priorities would be dependent on partnership working; it remained vital that all partners contributed towards its delivery.
- Preparing for planned curriculum changes in the face of a General Election may require a degree of flexibility both to immediate and long term priorities.
- The term ‘London Challenge’ immediately leads to comparisons to the well-resourced improvement programme for primary and secondary schools. It would be important to manage expectations as a post-16 London Challenge would entail a sector-led development approach but without the resources of the earlier programme.
- Colleges were facing considerable financial and quality challenges. Local authority involvement in both the type of provision available across the capital as well as quality will be needed.

6.3 Norfolk and Suffolk have begun a project to consider and review local provision. Education Funding Agency colleagues agreed to share the findings from the project.

**AP195: Members to consider and feedback comments to be incorporated in the Interim Statement of Priorities by 04.02.15**

## **7 Raising the Participation Age**

7.1 YB talked to the paper circulated in advance of the meeting highlighting the key performance figures. Attention was drawn to the variation of performance across the boroughs.

- 7.2 DC informed the OSG that local authorities were now required to record information on the National Client Caseload Management Information System (NCCIS) for young people aged 19 to 25 with special educational needs and disabilities (SEND). It was unclear who had received this information. It was agreed that Young People's Education and Skills would circulate the message.
- 7.3 LD informed OSG members that CLC Building Futures would be submitting feedback to the Department for Education (DfE) regarding the experimental NEET scorecard and would share their response with the OSG.
- 7.4 The OSG discussed the limited provision available for young people who were NEET outside term-time and the difficulty this was causing. There were mixed opinions whether full-time study programmes were the right solution for these young people, particularly given the English and maths requirement. However, OSG members noted that short, part-time study programmes could fill the gap in provision, but this would require robust local conversations with providers.

**AP196: Young People's Education and Skills to circulate the NCCIS notice for the recording of information for young people aged 19 to 25 with SEND**

**AP197: LD to share with OSG members CLC Building Futures feedback to the DfE regarding the experimental NEET scorecard**

## **8 Work plan monitoring**

- 8.1 The OSG sub-group chairs and Young People's Education and Skills officers discussed the paper circulated in advance of the meeting. The following specific points were raised:
  - 8.1.1 **SEND** - Planning was underway for two pan-London events (10 February and 10 March), to bring together commissioners and colleges to focus on education, health and care plans and to look at outcomes in the context of curriculum development. Additionally, a Learning Disability Confident employer event had been organised for the 26 February to be held at the Houses of Parliament. It had been organised with the support of Remploy, the Department for Work and Pensions, the Department for Education and Lee Scott MP, the government's special educational needs envoy.
  - 8.1.2 **External Funding Group** - The final meeting took place on 11 December. The meeting discussed the ESF 2007-2013 Programmes. The group took the view, as previously discussed at the OSG, that – in the light of the current location of responsibilities – local authorities' ambition for integrated commissioning would be best taken forward by London Councils through its relationship with the LEP.
  - 8.1.3 **ICYP Group** - Usage of the pan-London leavers process had steadily increased since the beginning of the 2014/15 academic year, from 43 returns in September to 101 returns in November. Half of London's boroughs were now receiving returns from their institutions via this process.
 

In partnership with the LEP S&EWG, Dr Deirdre Hughes had been commissioned to develop a 'London Careers Offer' for young people. A Senior Advisory Group had been set up to help guide and support the work. The group included members from the LEP, the S&EWG, the Young People's Education and Skills Board, and experts in the field.
  - 8.1.4 **Data Advisory Group** - A beta version of Skills Match had been released to user testers. As this was a complex modelling project there were a number of key caveats that needed to be considered when looking at the analysis, so the project team had sought some external challenge of the methodology and analysis. A small group of colleagues met in December to constructively

interrogate and refine the modelling and analysis. Colleagues from MIME Consulting were additionally meeting with analysts from the Greater London Authority (GLA) Economics team to test out the underlying methodology.

8.1.5 **Apprenticeships** - The Apprenticeship sub-group agreed to set up a working group to review and refine the existing London Borough Apprenticeship Awards. This would take place during February 2015 with any changes to be agreed by the sub-group on 17 March 2015.

8.2 OSG members reported that the Skills Funding Agency (the Agency) was accepting bids for increasing awareness of young people in Schools to apprenticeships and traineeships. It was requested that feedback is provided as to whether any Apprenticeship sub-group members had submitted a bid.

**AP198: Young People's Education and Skills to report back if Apprenticeship sub-group members had submitted a bid to the Agency.**

## **9 Policy Update**

9.1 NS talked to the paper circulated in advance of the meeting, in particular drawing attention to the government's response to the Apprenticeship consultation and High Needs Student (HNS) funding. OSG members discussed HNS funding; whilst it was recognised that it was an area where the DfE had increased investment, there remained a significant shortfall within local authority budgets, particularly for post-16.

## **10 AOB**

10.1 YB and OSG members thanked Lorraine Downes for her work within the 14 to 19 setting and wished her all the best for the future.

Blank Page



### Action Points from Operational Sub-group 2015-16

Action Point No.	Meeting Date	Action Point Description	Owner(s) - lead in bold	Review Date	Actions Taken	Open / Closed
194	23.1.15	Members interested in taking up the post of OSG Vice-Chair to contact Yolande Burgess	<b>Members</b>	30.1.15	Deadline 30.1.15. Announcement of Vice-Chair included in post meeting note of 2.2.15	<b>Closed</b>
195	23.1.15	Members to consider and feedback comments to be incorporated in Interim Statement of Priorities by 4.2.15	<b>Members</b>	4.2.15	Deadline passed	<b>Closed</b>
196	23.1.15	Circulate the NCCIS notice for the recording of information for young people aged 19 to 25 with SEND	<b>YPES</b>	2.2.15	Circulated in post meeting note 2.2.15	<b>Closed</b>
197	23.1.15	LD to share with OSG members CLC Building Futures feedback to the DfE regarding the experimental NEET scorecard	<b>LD</b>	15.5.15		
198	23.1.15	YPES to report back if Apprenticeship Sub-group members submitted a bid for the Increasing Awareness of Young People in Schools to apprenticeship and traineeship offer run by the SFA.	<b>YPES</b>	15.5.15	No. Of the representatives at the Apprenticeship subgroup meeting held 17 March, it was noted that a communication about this initiative had not been received	<b>Closed</b>

Blank Page

# Young People's Education and Skills Operational Sub-Group

## Work plan Monitoring – update May 2015

Item No: 3

**Date:** 15 May 2015

**Contact** Anna-Maria Volpicelli

**Telephone:** 020 7934 9779

**Email:** [Anna-maria.volpicelli@londoncouncils.gov.uk](mailto:Anna-maria.volpicelli@londoncouncils.gov.uk)

---

**Summary** This paper provides a summary update of the major Young People's Education and Skills work strands.

**Recommendations** Operational Sub-Group (OSG) members are asked to:

- note and comment on progress of work strands;
- consider and recommend effective means of communications with borough colleagues (see 5.3);
- consider and recommend 14 to 19 issues that merit closer attention, suggest any additional research or analysis, and propose areas of work that could be explored by task and finish groups (see 5.3).

---

## 1 Data

- 1.1 Young People's Education and Skills, with MIME Consulting, has launched [Skills Match](#), an interactive tool which allows the visual exploration of the relationship between skills supply and employer demand in London up to 2020. It brings together skills data and labour market data (at Level 3 and below), enabling policy-makers, practitioners and employers to take an intelligence-led, geographically-specific approach to addressing youth unemployment in London.
- 1.2 Skills and labour market data have been brought together in an entirely new way to create Skills Match. Because of this fact, an experimental version of the tool has been released. This is to encourage as many users as possible - particularly local authority planning and policy makers, careers advisers, school and college curriculum planners and employers - to try out [Skills Match](#) and provide feedback and constructive critique.
- 1.3 Please read the [Skills Match release note](#) for more information. A demonstration of Skills Match will take place at the OSG meeting on 15 May.

## 2 External Funding

- 2.1 European Structural and Investment Funds (ESIF) - The London Enterprise Panel's [dedicated webpage](#) remains the authoritative source of information about ESIF and colleagues are advised to refer to that regularly to keep abreast of developments. London Councils hosted an event for local authorities officers on 16 April 2015 and the

Greater London Authority (GLA) European Programmes Management Unit (EPMU) is in discussion with [Access Europe Network](#) and [London Voluntary Service Network](#) about:

- 2.1.1 briefing local authorities and other interested organisations about the funding opportunities available; and
- 2.1.2 providing opportunities for aspiring prime contractors to forge links with potential delivery partners in each contract package area (or sub-region).

Further details will be provided as soon as they become available.

- 2.2 Funds cannot flow from the European Union until the European Commission and UK government reach agreement on precise funding levels, activities and deliverables. There are a number of administrative hurdles to clear until that can happen. However, some procurement activity has already started: some programmes where national bodies are supplying match-funding to the European Regional Development Fund (ERDF) are being tendered and the EPMU has called for proposals where organisations have funds that they are seeking to match with European Social Fund (ESF). London Councils' Grants and Community Services Department has submitted a bid on behalf of a number of local authorities and other partners. By the time procurement is complete, it is hoped that all the administrative processes will also be completed so that contracts can be issued and delivery can start. Realistically, this is unlikely to be until the autumn term.
- 2.3 In the meantime, programmes in the previous funding round (including those that have been extended) are coming to an end and we are looking forward to reading the evaluations from the EPMU, Skills Funding Agency and providers. Equally, other external funding initiatives such as the Youth Contract have either ended or are coming to an end and we are looking to their funders to provide evaluations of their use of funds.

### **3 Improving Choices for Young People**

- 3.1 Young People's Education and Skills and the London Enterprise Panel's Skills and Employment Working Group have commissioned Dr Deirdre Hughes to work with stakeholders to design a framework for a careers offer for London. The London Ambitions Careers Offer includes seven key elements to establish a coherent framework for young people regardless of the particular school or college they attend. A careers curriculum from Key Stage 2 through to Key Stage 5 has also been designed. A presentation on the detail of the London Ambitions Careers Offer will be made to OSG members on 15 May.

### **4 Special Educational Needs and Disability (SEND)**

- 4.1 The Department for Education (DfE) [confirmed the nine regional leads for local authority networks](#) to support the implementation of the SEND reforms from April 2015. The London Borough of Bromley is the regional lead for London. The borough will receive a small amount of grant funding (£61,924) to develop partnerships, work with delivery partners to develop targeted support, share best practice and co-ordinate peer support activities. Young People's Education and Skills will be meeting with colleagues in Bromley and other delivery partners to support the co-ordination of activities.
- 4.2 Young People's Education and Skills held a successful London [Learning Disability Confident event](#) at the House of Commons on 26 February. Organised in conjunction with the Department for Education, the Department for Work and Pensions and Remploy, the event was hosted by Lee Scott, formally MP for Ilford and the previous government's special needs envoy. The event raised awareness of the barriers

individuals with learning disabilities can face when applying for jobs and at work. It also showed employers what simple steps they can take to improve recruitment and retention of this potential workforce. 20 employers signed the London Learning Disability Confident Pledge.

- 4.3 A series of In Control and London Councils sessions and workshops for SEND have been agreed for the remainder of the calendar year. The events will cover a range of issues and will provide colleagues with the opportunity to share emerging practice from the implementation of the SEND reforms. The June events are now up and bookable on the [London Councils](#) website.

## **5 Apprenticeships**

- 5.1 The last meeting of the Apprenticeship Sub-Group took place on 17 March. Negat Lodhi from the Skills Funding Agency delivered a presentation focusing on the [Future of apprenticeships in England](#).

- 5.2 The Department for Business, Innovation and Skills (BIS) is leading on the reforms. The aims of the reforms are to:

5.2.1 meet the needs of the future economy and businesses;

5.2.2 ensure apprenticeships are more rigorous and responsive to the needs of employers following Richard Review;

5.2.3 ensure apprenticeships are viewed with the same esteem as University;

5.2.4 build on existing strengths.

- 5.3 Subgroup members highlighted the following challenges with the apprenticeship proposals:

5.3.1 Whilst incentives for employers to take on targeted groups such as 16 to 18 year olds felt right, a multi-layer payment system would increase the risk to employers as it would rely on them understanding and drawing down funding directly.

5.3.2 Businesses were used to NVQ levels 1, 2 and 3 as a standard form of qualification. It remained unclear how business would interpret and value the new standards.

5.3.3 The reforms stated that government funding will not contribute towards the cost of in-house training that employers offer to apprentices - this may deter a number of employers that provide apprentices with in-house training.

5.3.4 London's apprenticeship market consists mainly of SMEs. The limited participation of SMEs in the development of the standards and piloting of the new funding approach remained a significant concern.

- 5.4 Subgroup members felt it was important to offer support and challenge to the Skills Funding Agency to inform debates around the implementation of the reforms across London.

## **6 Task and finish groups – taking forward a programme of work in 2015-16**

- 6.1 The Young People's Education and Skills work plan for 2015-2016 moves from standing sub-groups to time-specific 'task and finish groups'. It is envisaged that these groups will stem from support needs for matters that impact all local authorities and to take forward the priorities of the Young People's Education and Skills Board. The Board's priorities are articulated in the soon-to-be-published 'Interim Statement of Priorities':

6.1.1 develop an improvement programme for 16 to 18 provision in London through an 'Excellence Challenge';

- 6.1.2 enable business and education to work together more effectively;
  - 6.1.3 provide coherence to careers advice through a 'London Careers Offer';
  - 6.1.4 offer all young Londoners personalised pathways to Level 3 learning;
  - 6.1.5 ensure consistency in learning opportunities and better life outcomes for students with special educational needs and disabilities.
- 6.2 The priorities respond to the body of research the Board commissioned in the previous year, in particular the report by the University of London, Institute of Education [What is happening with 17+ participation, attainment and progression in London?](#).
- 6.3 OSG members are asked to consider (within the remit and priorities of Young People's Education and Skills):
- 6.3.1 effective means of communication with borough colleagues to remain abreast of aspects of work that the boroughs wish us to take forward;
  - 6.3.2 whether there are specific issues or topics that merit close analysis to establish its relative importance to enhancing young Londoner's education and skills;
  - 6.3.3 whether there is any established area of Young People's Education and Skills' work that needs additional research or data to support London's local authorities to better deliver their duties in relation to 14 to 19 education;
  - 6.3.4 whether there is a need for a dedicated task and finish group to give close consideration of any new or emerging' priorities or work streams.
- 6.4 To support the agreed programme of task and finish group activity, it is proposed that the ex-Chairs of the sub-groups remain on the OSG to retain their expertise and continue to guide the work of the Young People's Education and Skills team. This has already proved successful with the OSG SEND Lead, following a move from a standing working group to a programme of support and activities.
- 6.5 For information the Data Advisory Group met for the last time on 7 May and has agreed an initial task and finish group to explore data issues that need to be forward..

## **7 Recommendations**

- 7.1 OSG members are asked to:
- 7.1.1 note and comment on progress of work strands;
  - 7.1.2 consider and recommend effective means of communications with borough colleagues (see 5.3);
  - 7.1.3 consider and recommend 14 to 19 issues that merit closer attention, suggest any additional research or analysis, and propose areas of work that could be explored by task and finish groups (see 5.3).

---

### **Note of thanks**

Yolande and the team wish to formally record their heartfelt thanks to the Chairs and members of the Data Advisory Group, the External Funding Group and the Improving Choices for Young People Group.

Your contributions, support, challenge, openness and generosity in terms of time and commitment during the lifetime of the sub-groups has made a vital contribution to improving the 14 to 19 education landscape across London.

We know that we will continue to work with many of you through a programme of task and finish groups that we will arrange over the coming months.

# Young People's Education and Skills Board

Thursday 4 June, 14.00 – 16.00

**Location:** London Councils, Meeting room 1, 59½ Southwark Street, SE1 0AL

**Contact Officer:** Neeraj Sharma

**Telephone:** 020 7934 9524      **Email:** Neeraj.sharma@londoncouncils.gov.uk

---

## Agenda

1. Welcome and introductions
2. Declarations of Interest
3. Notes of last meeting and matters arising
4. Policy position *(paper)* - For decision
  - Post-election update
  - Vision and priorities
5. London Ambitions Careers Offer *(presentation (Dr Deirdre Hughes) and paper)* - For decision
6. Intelligent London – Skills Match *(presentation (MIME Consultation))* - For information
7. Raising the Participation Age *(standing item report)* - For information
8. Any other business

**Date of next meeting: Thursday 12 November, 2-4pm, London Councils**

Blank Page



# Young People's Education and Skills Operational Sub-Group

**Latest participation, NEET and activity 'not known' statistics** Item: 7 (a)

**Date:** 15 May 2015

**Contact:** Peter O'Brien

**Telephone:** 020 7934 9743

**Email:** [peter.obrien@londoncouncils.gov.uk](mailto:peter.obrien@londoncouncils.gov.uk)

## 1 16 to 18 Academic Age Summary (March 2015 – from [NCCIS](#)<sup>1&2</sup>)

- 1.1 The March not in education, employment or training (NEET) percentage for London is 3.5 per cent, the same as the previous month and below the national average of 4.8 per cent. The current percentage of young people whose participation status is 'not known' is 6.9 per cent, which continues the downward trend this calendar year from 8.0 per cent in January and 7.4 per cent in February. London remains above the national average figure of 6.5 per cent (see Table1).
- 1.2 The percentage of 16 to 18 year olds who are NEET and participation 'not known' varies significantly by borough ranging from 1.7 per cent to 6.0 per cent for NEET and 1.1 per cent to 16.1 per cent for participation status 'not known' (excluding the City of London) (see Figures 1- 4).
- 1.3 The three month average comparison between 2013/14 and 2012/13 shows a lower percentage for both NEET and participation status 'not known' than last year (see Tables 2 and 3).
- 1.4 The number of young people recorded as NEET but not available<sup>3</sup> in March 2015 was 1,440, or 21.1 per cent of the (unadjusted) total NEET cohort.

*Table 1: Volume and percentage of 16-18 year-olds who are participating in education, employment or training (EET), not in education, employment or training (NEET) and whose activity is 'not known'*

Region	Adjusted EET	Adjusted NEET	% NEET	16-18s not known	% 16-18s not known
England	1,598,860	80,298	4.8%	115,297	6.5%
London	231,381	8,385	3.5%	17,783	6.9%

*Table 2: Percentage of 16-18 year olds who are NEET for the past three months for 2013/14 and 2014/15*

Region	2014/15				2013/14			
	Jan-15	Feb-15	Mar-15	Ave	Jan-14	Feb-14	Mar-15	Ave
England	4.7%	4.8%	4.8%	4.7%	5.3%	5.3%	5.3%	5.3%
London	3.4%	3.5%	3.5%	3.4%	3.9%	4.0%	4.0%	4.0%

*Table 3: Percentage of 16-18 year olds whose participation status is 'not known' for the past three months for 2013/14 and 2014/15*

Region	2014/15				2013/14			
	Jan-15	Feb-15	Mar-15	Ave	Jan-14	Feb-14	Mar-14	Ave
England	7.2%	6.9%	6.5%	6.9%	7.5%	7.1%	6.9%	7.2%
London	8.0%	7.4%	6.9%	7.5%	9.4%	8.3%	7.9%	8.5%

Figure 1: 16-18 year-olds NEET by London Borough (March 2015, source NCCIS)

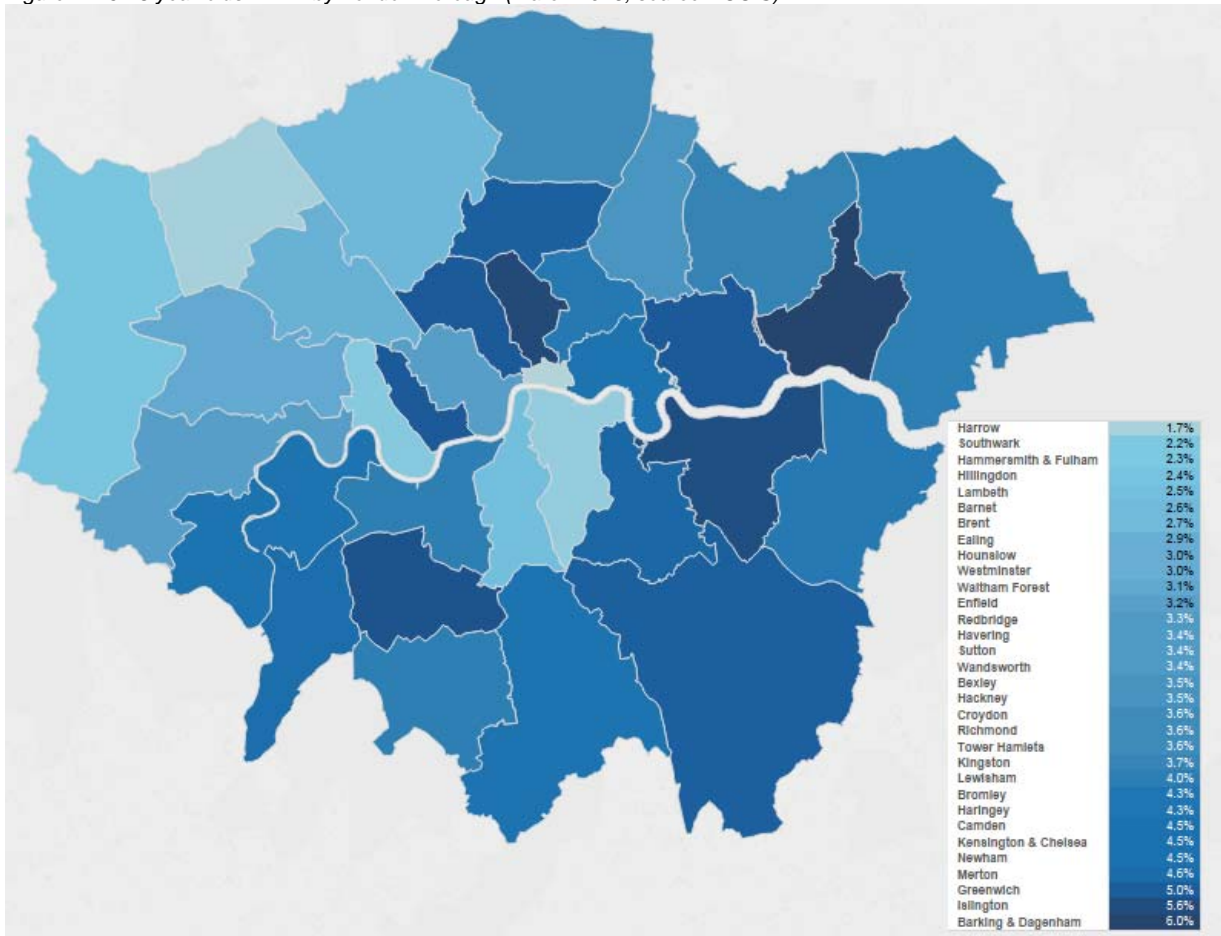


Figure 2: 16-18 year olds NEET by age and London borough (March 2015, source NCCIS)

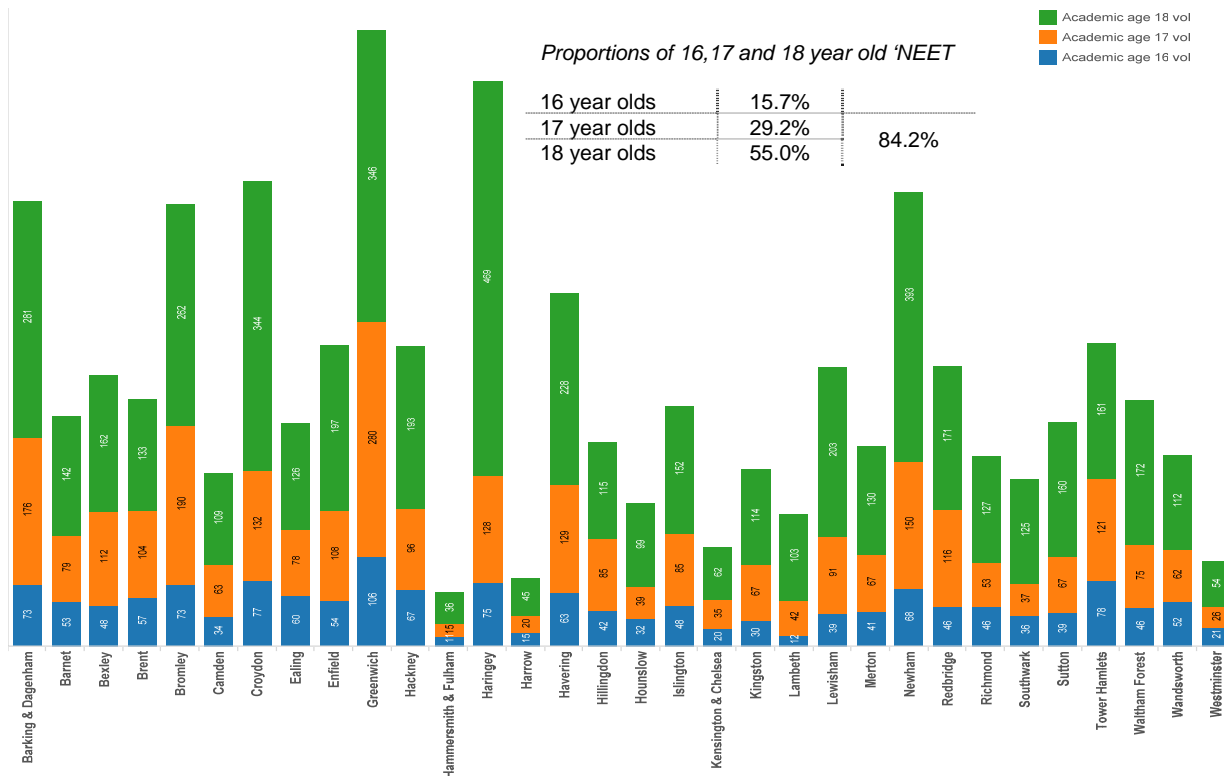


Figure 3: 16-18 year-olds whose participation status is 'not known' by London borough (March 2015, NCCIS)

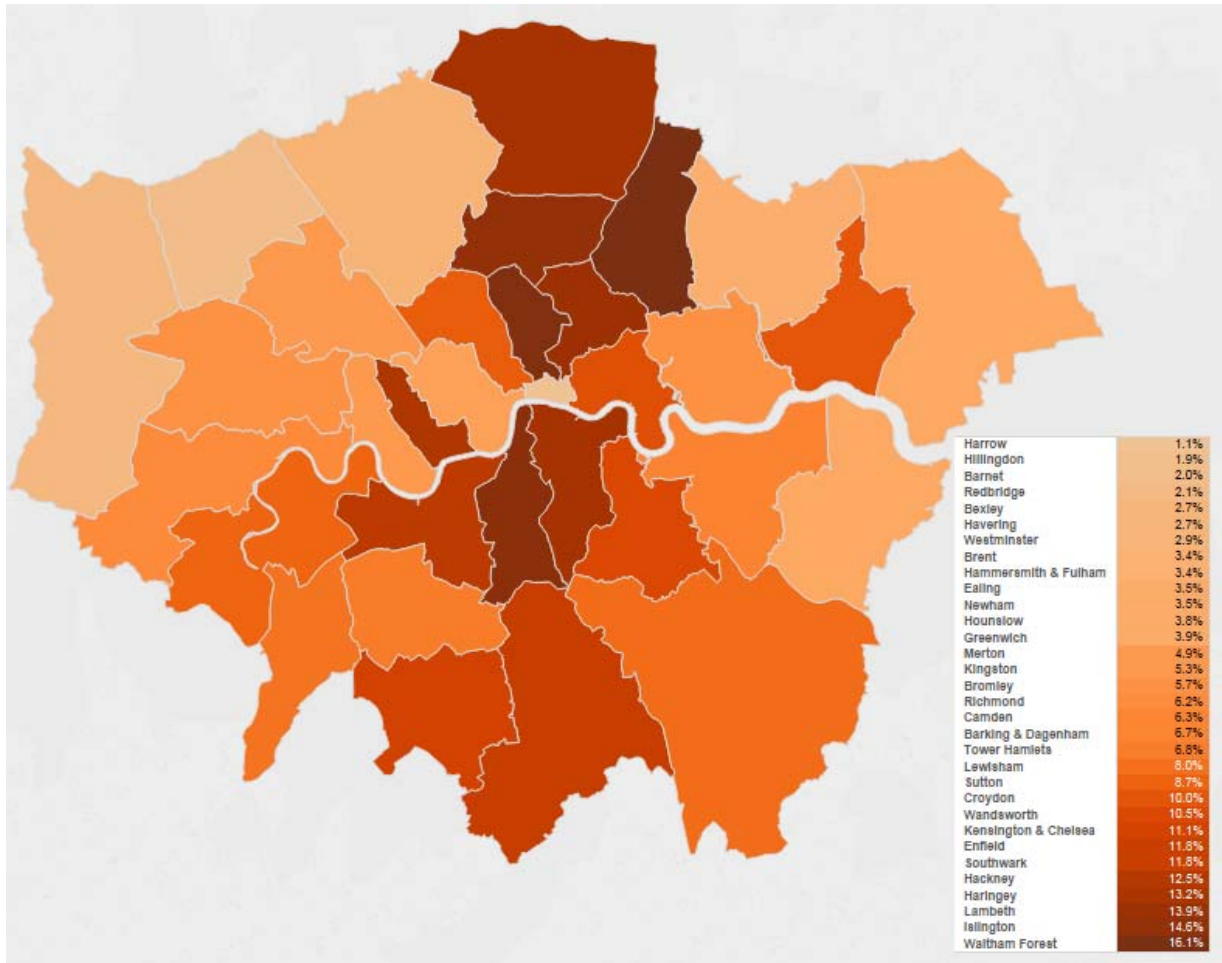
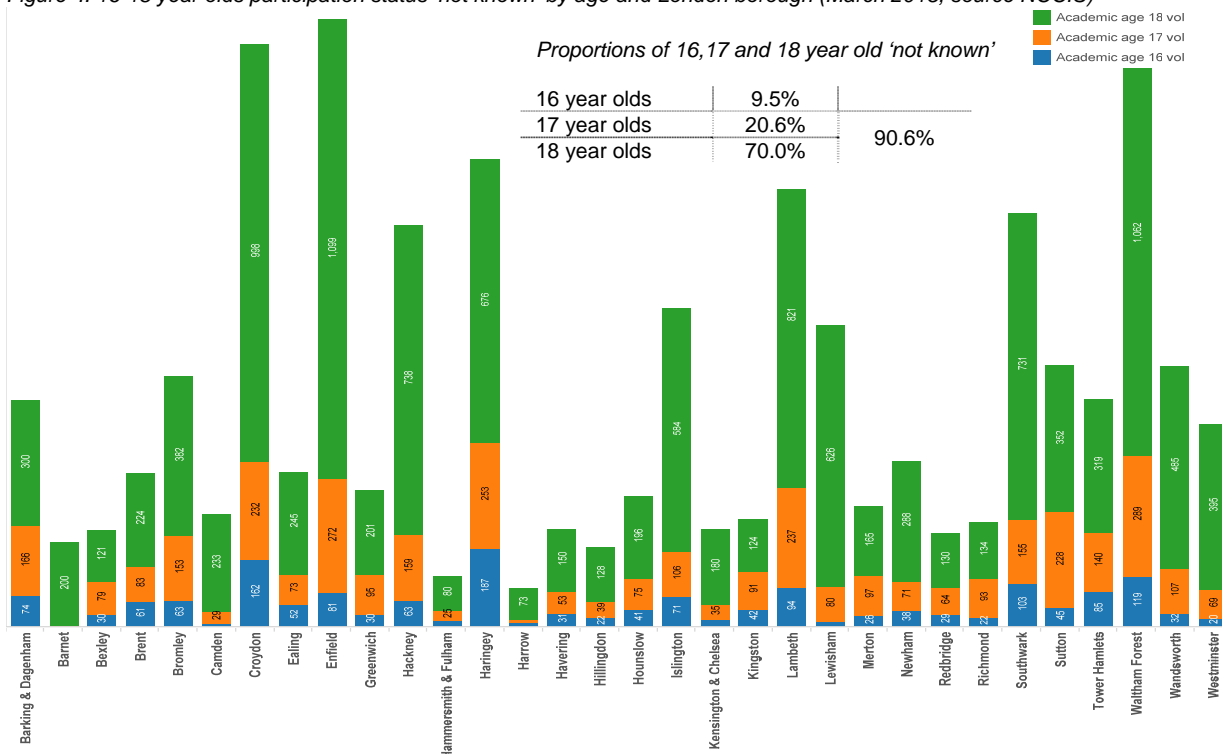


Figure 4: 16-18 year olds participation status 'not known' by age and London borough (March 2015, source NCCIS)



## 2 16 and 17 Year Old Participation in Education and Training (December 2014 - latest available from the [Department for Education](#)<sup>4</sup>)

- 2.1 On 12 March 2015 the Department for Education (DfE) published 16 and 17 year old participation data that highlights where participation is rising, static or falling. The data also provides a breakdown by type of participation, age, gender and ethnic group.
- 2.2 London's participation in December 2014 was 92.0 per cent, an improvement of 1.9 percentage points from the previous December but a small 0.4 percentage point decrease from the June 2014 position. London's participation is 1.8 percentage points above the national figure (see Table 4). The majority of 16 and 17 year olds in London (88.7 per cent) were participating in full time education and training, which is 5.5 percentage points higher than the national figure, although a smaller proportion were participating in Apprenticeships and employment with training than nationally (see Table 5). The percentage participating at age 16 (the age group currently covered under 'the duty') in London was higher than those participating at 17 by 5.5 percentage points (see Table 6). Although participation increased or was broadly static in the majority of London local authorities, it decreased in seven boroughs (the largest decrease was 4.1%).

Table 4: Participation - percentage over time: proportion of 16-17 year-olds in education and training, Dec 14 (source DfE)

Region	Dec 2013	Mar 2014	Jun 2014	Dec 2014	Percentage point change in the last 12 months	
England	89.8%	90.3%	89.7%	90.2%	0.4%	↻
London	90.1%	92.3%	92.4%	92.0%	1.9%	↻

Table 5: Participation - percentage by type of activity, Dec 14

Region	Proportion of 16 and 17 year olds recorded as participating in:					
	Full time education and training	Apprenticeship	Work based learning	Part time education	Employment combined with training	Other
England	83.2%	4.2%	1.3%	0.6%	0.6%	0.3%
London	88.7%	1.9%	0.5%	0.4%	0.2%	0.2%

Table 6: Participation - percentage by age and gender, Dec 14

Region	Percentage 16 year olds recorded as participating in education or training			Percentage 17 year olds recorded as participating in education or training		
	Female	Male	Total	Female	Male	Total
England	94.8%	93.6%	94.2%	87.7%	85.0%	86.3%
London	95.2%	94.3%	94.7%	90.7%	87.9%	89.3%

## 3 16-24 NEET Statistics Quarterly Brief (SFR08/2015 26 February 2015, Quarter 4 [October - December 2014] - latest available from [Gov.uk](#))<sup>5</sup>

- 3.1 Both the volume and percentage of 16 to 24 year olds who were NEET in Quarter 4 of 2014 in London have decreased since Quarter 3 and are lower than the same quarter last year (see Table 7). The London NEET percentage remains below the national figure by approximately 2 percentage points (Table 7 and Figure 5).
- 3.2 The percentage of 18 to 24 year olds and 19 to 24 year olds who were NEET in Quarter 3 of 2014 in London have reduced since Quarter 3 and are significantly lower than the same quarter last year. The London NEET rates for 18 to 24 year olds and 19 to 24 year olds remain below the national averages (see Tables 8 and 9).

Table 7: Estimated number of 16-24 year-olds NEET (SFR08/2015)

Region	Quarter 4							
	2011		2012		2013		2014	
	Volume	%	Volume	%	Volume	%	Volume	%
England	967,000	16.0%	894,000	14.9%	849,000	14.1%	787,000	13.1%
London	139,000	14.8%	144,000	15.3%	124,000	13.3%	106,000	11.1%

Figure 5: Comparison between 16-24 NEET in London and England over time (SFR08/2015)

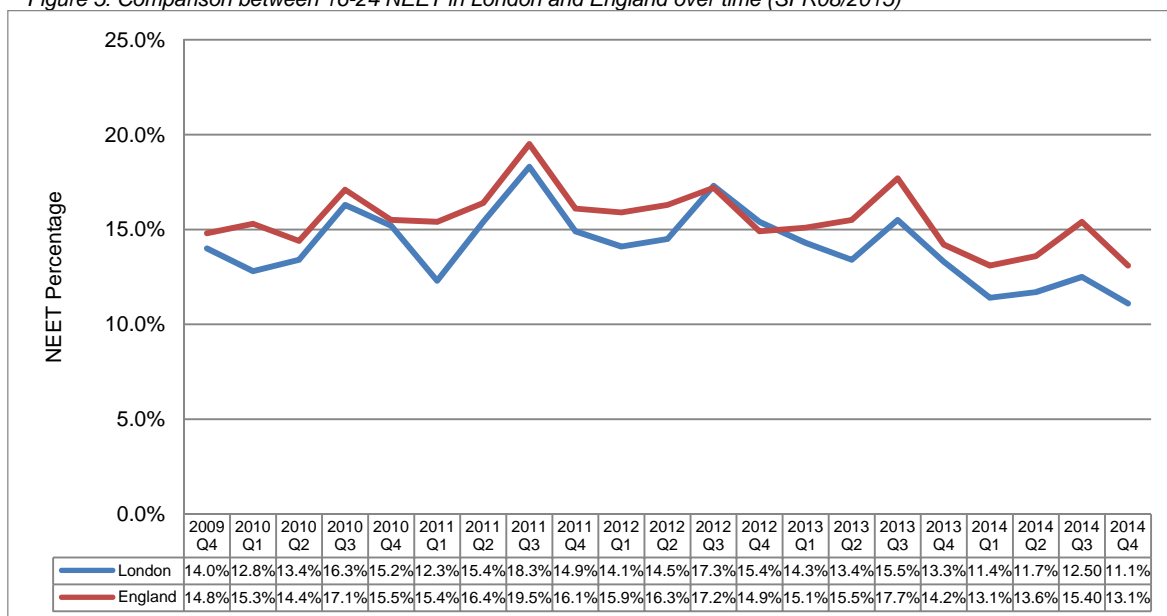


Table 8: Estimated number and proportion of 18-24 year-olds NEET (SFR08/2015)

Region	Quarter 4							
	2011		2012		2013		2014	
	Volume	%	Volume	%	Volume	%	Volume	%
England	883,000	18.5%	839,000	17.6%	799,000	16.7%	738,000	15.5%
London	131,000	17.1%	136,000	17.9%	117,000	15.6%	101,000	13.1%

Table 9: Estimated number and proportion of 19-24 year-olds NEET (SFR08/2015)

Region	Quarter 4							
	2011		2012		2013		2014	
	Volume	%	Volume	%	Volume	%	Volume	%
England	787,000	19.0%	742,000	18.1%	705,000	17.1%	654,000	15.9%
London	117,000	17.2%	123,000	18.3%	105,000	15.6%	92,000	13.5%

<sup>1</sup> The [National Client Caseload Information System](#) (NCCIS) is a gateway for local authorities to access and submit performance data and information to the Department for Education regarding the participation of 16-18 year olds in education, employment and training

<sup>2</sup> August to November figures will not be formally reported due to data volatility in the first term of the academic year

<sup>3</sup> Includes young carers, teenage parents and mothers-to-be, and young people with a serious or on-going health problem

<sup>4</sup> The Department for Education uses information from the Client Caseload Information System to estimate the number and proportion of young people participating in different types of education and training in each local authority area. The figures are intended to support local authorities to track their participation performance and their progression to achieving their Raising the Participation Age (RPA) goals

<sup>5</sup> The 16-24 NEET Statistics Quarterly Brief combines the Participation Statistical First Release, the Quarterly [Labour Force Survey](#) and 16-18 NEET statistics from NCCIS to create a profile of the NEET 16-24 age group

Blank Page

# Young People's Education and Skills U] ^!æā } æÁÛ` àËGroup

## Pan-London Leavers Process

Item no: + fVL

**Report by:** Yolande Burgess **Job title:** Strategy Director

**Date:** FÍ May 2015

**Telephone:** 020 7934 9739 **Email:** [yolande.burgess@londoncouncils.gov.uk](mailto:yolande.burgess@londoncouncils.gov.uk)

**Summary** This report provides an update on usage of the pan-London leavers process.

**Recommendations** ÁUÛ members are asked to note the report.

### 1 Background

- 1.1 The pan-London early leavers process was introduced in September 2013 to enable London's post-16 providers to tell local authorities about early leavers, a statutory requirement under Raising the Participation Age legislation. The process is also used by colleges to inform local authorities about starters at the beginning of a new academic year.
- 1.2 Usage of the process is monitored on a monthly basis to gauge the number of interactions between providers and local authorities across London. It should be noted that London Councils does not have access to the actual data that is shared.

### 2 Usage

- 2.1 The following number of returns were made over the past five months:

Month	Attached returns	Nil returns	Total returns
March	49	4	53
February	79	41	120
January	64	44	108
December	79	26	105
November	69	19	88

- 2.2 Returns have been made by 252 unique users since the beginning of the academic year. 20 of the 32 London boroughs have used the process this academic year.

### 3 Recommendation

- 3.1 OSG members are asked to note the report.

Blank Page